

LUHRING AUGUSTINE

531 West 24th Street
New York NY 10011
tel 212 206 9100 fax 212 206 9055
www.luhringaugustine.com

Prints and Editions

January 25 – February 23, 2019

Opening reception: Thursday, January 24, 6-8pm

Entrance:



Tom Friedman

Untitled (dollar print, back), 2011

Silkscreen print

From an edition of 100 and 10 artist's proofs

25 1/4 x 56 1/4 inches (64.14 x 142.88 cm)

Framed: 26 3/4 x 57 3/4 inches (68 x 146.7 cm)



Jeremy Moon

Starlight Hour, 1965-67

Screenprint on paper

From an edition of 75

25 3/4 x 19 3/4 inches (65.4 x 50.2 cm)

Framed: 28 3/8 x 22 3/8 inches (72.1 x 56.8 cm)

Main Gallery (Clockwise from Left):



Philip Taaffe

Ornamental Panel I, 2011

Screenprint

From an edition of 45 with 8 artist's proofs

Image: 38 x 28 inches (96.5 x 71.1 cm)

Paper: 45 1/4 x 35 3/8 inches (114.9 x 89.8 cm)

Framed: 47 1/8 x 36 1/4 (199.7 x 92.1 cm)

LUHRING AUGUSTINE

531 West 24th Street
New York NY 10011
tel 212 206 9100 fax 212 206 9055
www.luhringaugustine.com



Philip Taaffe

Ornamental Panel III, 2011

Screenprint

From an edition of 45 with 8 artists proofs

Image: 38 x 28 inches (96.5 x 71.1 cm)

Paper: 45 1/4 x 35 3/8 inches (114.9 x 89.8 cm)

Framed: 47 1/8 x 36 1/4 (199.7 x 92.1 cm)



Christopher Wool

Untitled, 2018

Portfolio of four intaglio polymer photogravure prints on

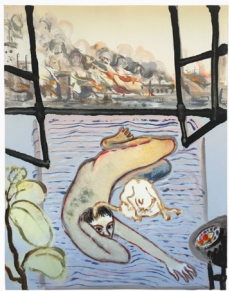
Hahnemühle Copperplate Bright White 300 gsm paper

From an edition of 20, 5 artist's proofs, and 1 printer's proof

Image: 15 7/8 x 11 7/8 inches (40.3 x 30.2 cm)

Paper: 22 x 18 inches (55.9 x 45.7 cm)

Framed: 20 3/4 x 20 inches (62.9 x 50.8 cm)



Sanya Kantarovsky

Boring Flames, 2019

Monotype

22 x 18 inches (55.9 x 45.7 cm)

Framed: 23 x 18 7/8 x 1 1/4 inches (58.4 x 47.9 x 3.2 cm)

Printed by 10 Grand Press



Sanya Kantarovsky

Dvor II, 2019

Monotype

22 x 18 inches (55.9 x 45.7 cm)

Framed: 23 x 18 7/8 x 1 1/4 inches (58.4 x 47.9 x 3.2 cm)

Printed by 10 Grand Press

LUHRING AUGUSTINE

531 West 24th Street
New York NY 10011
tel 212 206 9100 fax 212 206 9055
www.luhringaugustine.com



Sanya Kantarovsky

Tutor, 2019

Monotype

22 x 18 inches (55.9 x 45.7 cm)

Framed: 23 x 18 7/8 x 1 1/4 inches (58.4 x 47.9 x 3.2 cm)

Printer by 10 Grand Press



Sanya Kantarovsky

Cleanse, 2019

Monotype

22 x 18 inches (55.9 x 45.7 cm)

Framed: 23 x 18 7/8 x 1 1/4 inches (58.4 x 47.9 x 3.2 cm)

Printed by 10 Grand Press



Reinhard Mucha

BBK-SL-KNY-Edition, 1990, 1999

Polyptych, six parts

Profiled solid wood stained and varnished (*frames*), float glass, alkyd enamel painted on reverse of glass, blockboard veneered, stained and varnished (*mat*), offset print on coated fine paper, Iris Giclée prints on deckle edged paper (*artist's posters*)

Ed. 12 + 3 a.p.

Overall: 91.6 x 103.4 x 2.4 inches (232.8 x 262.8 x 6.2 cm)

LUHRING AUGUSTINE

531 West 24th Street
New York NY 10011
tel 212 206 9100 fax 212 206 9055
www.luhringaugustine.com



Yasumasa Morimura
Face Study V, 1994
Gelatin silver print
From an edition of 10
10 x 8 inches (25.4 x 20.3 cm)
Framed: 24 3/4 x 12 inches (62.9 x 30.5 cm)



Yasumasa Morimura
Face Study VI, 1994
Gelatin silver print
From an edition of 10
10 x 8 inches (25.4 x 20.3 cm)
Framed: 24 3/4 x 12 inches (62.9 x 30.5 cm)



Yasumasa Morimura
Face Study I, 1994
Gelatin silver print
From an edition of 10
10 x 8 inches (25.4 x 20.3 cm)
Framed: 24 3/4 x 12 inches (62.9 x 30.5 cm)



Yasumasa Morimura
Face Study VII, 1994
Gelatin silver print
From an edition of 10
10 x 8 inches (25.4 x 20.3 cm)
Framed: 24 3/4 x 12 inches (62.9 x 30.5 cm)

LUHRING AUGUSTINE

531 West 24th Street
New York NY 10011
tel 212 206 9100 fax 212 206 9055
www.luhringaugustine.com



Christopher Wool
Untitled, 2014
Monotypes over photogravure
18 3/4 x 15 inches (47.6 x 38.1 cm)
Framed: 26 3/8 x 23 1/4 inches (67 x 59.1 cm)



Christopher Wool
Untitled, 2014
Monotypes over photogravure
18 3/4 x 15 inches (47.6 x 38.1 cm)
Framed: 26 3/8 x 23 1/4 inches (67 x 59.1 cm)



Christopher Wool
Untitled, 2014
Monotypes over photogravure
18 3/4 x 15 inches (47.6 x 38.1 cm)
Framed: 26 3/8 x 23 1/4 inches (67 x 59.1 cm)



Tunga
True Rouge, 1998
Lithograph
Edition 11 / 24
Poem by Simon Lane
30 x 44 inches (76.2 x 111.76 cm)
Framed: 48 x 34 inches (121.9 x 86.4 cm)

LUHRING AUGUSTINE

531 West 24th Street
New York NY 10011
tel 212 206 9100 fax 212 206 9055
www.luhringaugustine.com



Rachel Whiteread

Untitled (Nets), 2002

Suite of five etched German silver (copper/nickel/zinc) sheet
metal gratings in white Museum Board mats
From an edition of 36 and 10 artist's proofs
25 1/2 x 20 1/4 inches (64.8 x 52.1 cm)
Framed: 33 3/8 x 27 3/4 inches (84.8 x 70.5 cm), each

Second Gallery (Clockwise from Left):



Zarina

Untitled, 1969

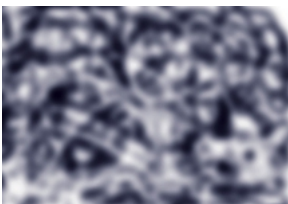
Woodcut printed in burnt umber on Indian handmade paper
From an edition of 20
30 x 22 inches (76.2 x 55.88 cm)
Framed: 33 x 24 3/4 inches (83.8 x 62.9 cm)



Glenn Ligon

Untitled, 2016

Suite of 17 screenprints
From an edition of 5 and 3 artist's proofs
Published by Axelle Editions, New York
36 x 26 inches (91.4 x 66 cm), each
Framed: 37 7/8 x 28 inches (96.2 x 71.1 cm), each



Jeff Elrod

Ambient Fiction, 2017

Inkjet print on archival paper
From an edition of 75 and 20 artist's proofs
21 1/8 x 30 inches (53.7 x 76.2 cm)
Framed: 28 1/4 x 37 1/8 inches (71.8 x 94.3 cm)