

# LUHRING AUGUSTINE

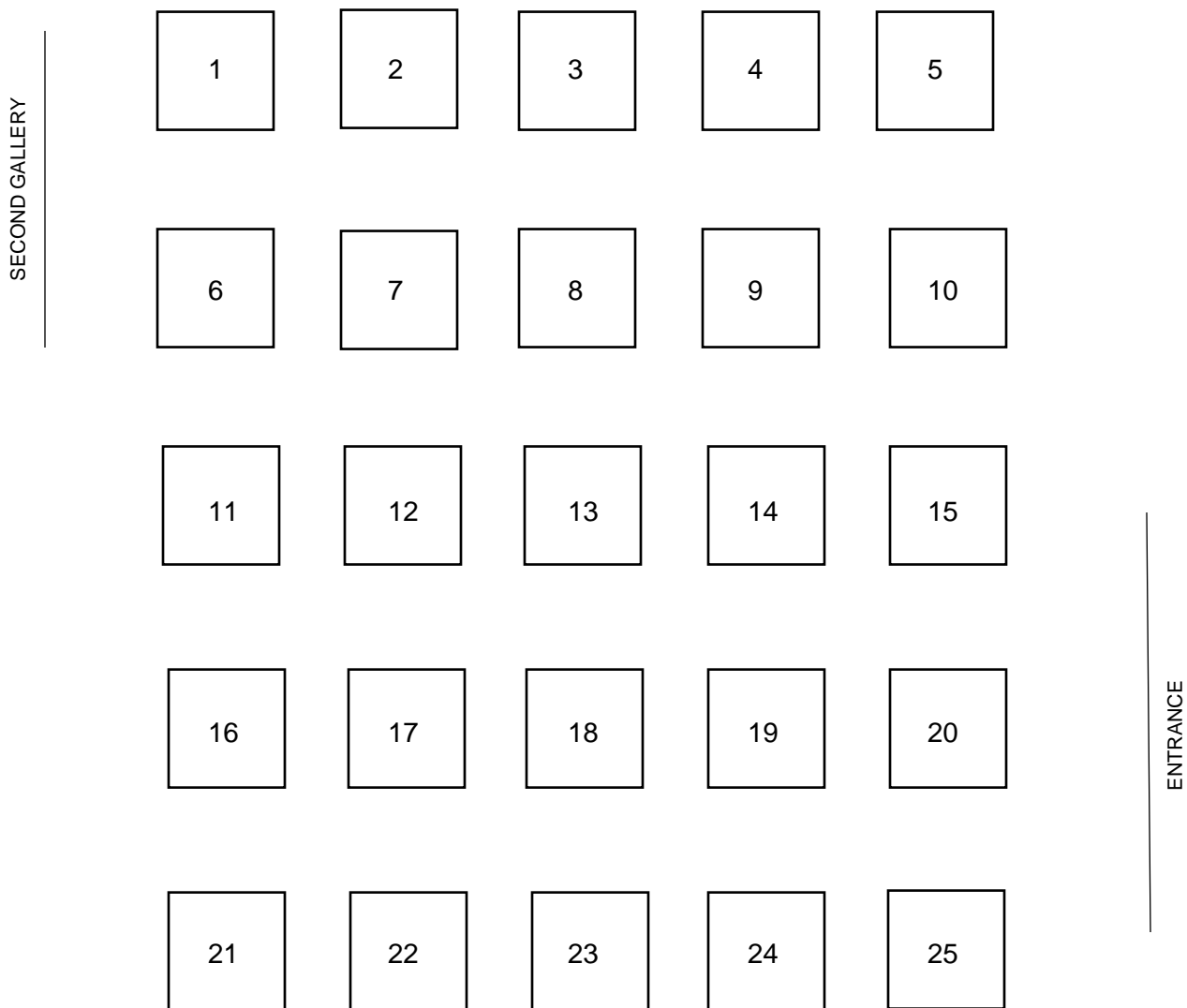
531 West 24th Street  
New York NY 10011  
tel 212 206 9100 fax 212 206 9055  
www.luhringaugustine.com

## **Lumina**

Ritsue Mishima

September 13 – October 26, 2019

### *Main Gallery*



# LUHRING AUGUSTINE

531 West 24th Street  
New York NY 10011  
tel 212 206 9100 fax 212 206 9055  
[www.luhringaugustine.com](http://www.luhringaugustine.com)

## Main Gallery

1.



**Ritsue Mishima**  
*PIETRA LUNGA*, 2019  
Blown glass  
16 x 13 x 13 inches  
40.5 x 33 x 33 cm

2.



**Ritsue Mishima**  
*MILLELUCI*, 2019  
Blown glass  
11 1/4 x 10 5/8 x 10 5/8 inches  
28.5 x 27 x 27 cm

3.



**Ritsue Mishima**  
*SHASTA*, 2018  
Blown glass  
16 1/2 x 14 1/8 x 14 1/8 inches  
42 x 36 x 36 cm

4.



**Ritsue Mishima**  
*FIORE DI MARE*, 2019  
Blown glass  
16 x 13 x 13 inches  
40.5 x 33 x 33 cm

# LUHRING AUGUSTINE

531 West 24th Street  
New York NY 10011  
tel 212 206 9100 fax 212 206 9055  
[www.luhringaugustine.com](http://www.luhringaugustine.com)

5.



**Ritsue Mishima**

*JOMON*, 2019

Blown glass

19 1/4 x 12 5/8 x 12 5/8 inches

49 x 32 x 32 cm

6.



**Ritsue Mishima**

*FLOW EAST*, 2019

Blown glass

21 7/8 x 10 7/8 x 10 7/8 inches

55.5 x 27.5 x 27.5 cm

7.



**Ritsue Mishima**

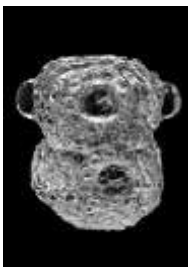
*DRYADE*, 2019

Blown glass

28 x 10 1/4 x 10 1/4 inches

71 x 26 x 26 cm

8.



**Ritsue Mishima**

*DOGU*, 2019

Blown glass

16 x 13 x 13 inches

40.5 x 33 x 33 cm

# LUHRING AUGUSTINE

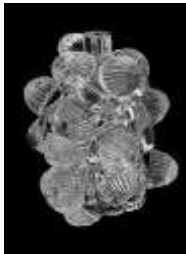
531 West 24th Street  
New York NY 10011  
tel 212 206 9100 fax 212 206 9055  
[www.luhringaugustine.com](http://www.luhringaugustine.com)

9.



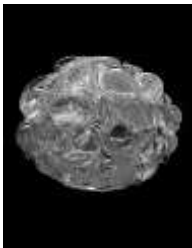
**Ritsue Mishima**  
*ASCENSIONE*, 2018  
Blown glass  
22 1/4 x 14 x 14 inches  
56.5 x 35.5 x 35.5 cm

10.



**Ritsue Mishima**  
*LUCE FOSSILE*, 2019  
Blown glass  
10 5/8 x 7 5/8 x 7 5/8 inches  
27 x 19.5 x 19.5 cm

11.



**Ritsue Mishima**  
*MEDUSA*, 2019  
Blown glass  
14 1/8 x 15 3/4 x 15 3/4 inches  
36 x 40 x 40 cm

12.

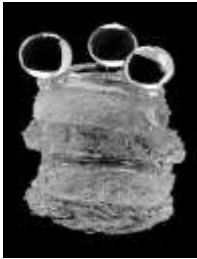


**Ritsue Mishima**  
*SPIN*, 2019  
Blown glass  
20 1/8 x 16 1/8 x 16 1/8 inches  
51 x 41 x 41 cm

# LUHRING AUGUSTINE

531 West 24th Street  
New York NY 10011  
tel 212 206 9100 fax 212 206 9055  
[www.luhringaugustine.com](http://www.luhringaugustine.com)

13.



**Ritsue Mishima**

*TRIONFO*, 2018

Blown glass

21 x 15 1/8 x 15 1/8 inches

53.3 x 38.5 x 38.5 cm

14.



**Ritsue Mishima**

*SEMI*, 2019

Blown glass

5 1/8 x 5 1/2 x 5 7/8 inches (each)

13 x 14 x 15 cm

15.



**Ritsue Mishima**

*FRUTTO DI FUOCO*, 2019

Blown glass

15 1/8 x 16 3/4 x 16 3/4 inches

38.5 x 42.5 x 42.5 cm

16.



**Ritsue Mishima**

*WATER CROWN*, 2019

Blown glass

18 1/2 x 14 1/8 x 14 1/8 inches

47 x 36 x 36 cm

# LUHRING AUGUSTINE

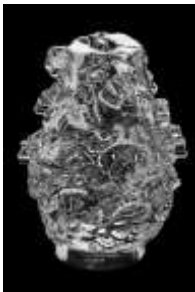
531 West 24th Street  
New York NY 10011  
tel 212 206 9100 fax 212 206 9055  
[www.luhringaugustine.com](http://www.luhringaugustine.com)

17.



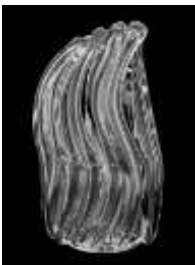
**Ritsue Mishima**  
*PAGODA*, 2019  
Blown glass  
7 5/8 x 4 5/8 x 4 5/8 inches  
19.5 x 11.8 x 11.8 cm

18.



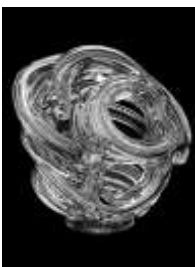
**Ritsue Mishima**  
*LUMI*, 2018  
Blown glass  
15 1/2 x 12 1/4 x 12 1/4 inches  
39.3 x 31 x 31 cm

19.



**Ritsue Mishima**  
*WATER ABSTRACT*, 2019  
Blown glass  
22 1/2 x 11 5/8 x 11 5/8 inches  
57 x 29.5 x 29.5 cm

20.

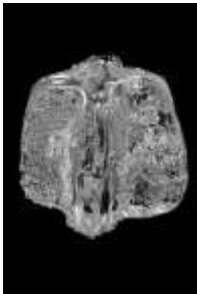


**Ritsue Mishima**  
*INCONSCIO*, 2019  
Blown glass  
17 1/2 x 16 1/2 x 11 7/8 inches  
44.5 x 42 x 30.2 cm

# LUHRING AUGUSTINE

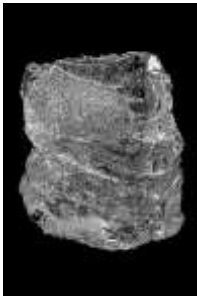
531 West 24th Street  
New York NY 10011  
tel 212 206 9100 fax 212 206 9055  
[www.luhringaugustine.com](http://www.luhringaugustine.com)

21.



**Ritsue Mishima**  
*CRYSTAL STAR*, 2018  
Blown glass  
9 7/8 x 11 3/8 x 11 3/8 inches  
25 x 29 x 29 cm

22.



**Ritsue Mishima**  
*CRYSTAL NEST*, 2018  
Blown glass  
15 1/8 x 13 1/4 x 13 1/4 inches  
38.5 x 33.5 x 33.5 cm

23.



**Ritsue Mishima**  
*SKYLIGHT*, 2019  
Blown glass  
20 7/8 x 15 3/8 x 15 3/8 inches  
53 x 39 x 39 cm

24.

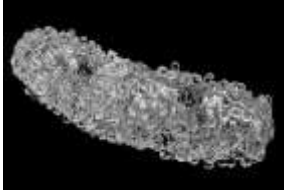


**Ritsue Mishima**  
*LUMINANCE*, 2019  
Blown glass  
14 3/8 x 17 7/8 x 17 7/8 inches  
36.5 x 45.5 x 45.5 cm

# LUHRING AUGUSTINE

531 West 24th Street  
New York NY 10011  
tel 212 206 9100 fax 212 206 9055  
[www.luhringaugustine.com](http://www.luhringaugustine.com)

25.



**Ritsue Mishima**  
*ARCA DI LUCE*, 2019  
Blown glass  
10 1/8 x 28 3/4 x 10 1/8 inches  
25.5 x 73 x 25.5 cm

*Second Gallery*



**Ritsue Mishima**  
*LIGHT IS ALWAYS THERE*, 2017  
Nijo Castle, Kyoto  
Filmed by Ufer! Art Documentary  
Music: Tranquility by Kevin MacLeod