

# LUHRING AUGUSTINE

531 West 24th Street  
New York NY 10011  
tel 212 206 9100 fax 212 206 9055  
[www.luhringaugustine.com](http://www.luhringaugustine.com)

**Leon Kossoff**  
Luhring Augustine Chelsea  
April 17-June 20, 2026

Entrance:



**Leon Kossoff**  
*Self-portrait with Christ Church, 1986*  
Oil on board  
40 3/8 x 30 1/8 inches  
(102.6 x 76.5 cm)

Main Gallery (*clockwise, left to right*):



**Leon Kossoff**  
*Red Brick School Building, Winter, 1982*  
Oil on board  
48 x 59 3/4 inches  
(121.9 x 151.9 cm)



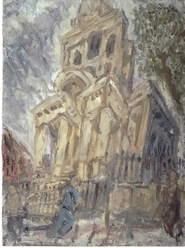
**Leon Kossoff**  
*Outside Kilburn Underground Station, November, 1984*  
Oil on board  
77 5/8 x 83 7/8 inches  
(197.2 x 213 cm)



**Leon Kossoff**  
*Outside Kilburn Underground, Indian Summer: For Rosalind, 1978*  
Oil on canvas  
60 x 84 inches  
(152.4 x 213.4 cm)

# LUHRING AUGUSTINE

531 West 24th Street  
New York NY 10011  
tel 212 206 9100 fax 212 206 9055  
[www.luhringaugustine.com](http://www.luhringaugustine.com)



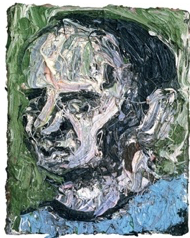
**Leon Kossoff**  
*Christ Church, Summer Afternoon, 1994*  
Oil on board  
78 x 57 3/4 inches  
(198.1 x 146.7 cm)



**Leon Kossoff**  
*The Flower Stall, Embankment Station, Stormy Spring, 1994*  
Oil on board  
52 3/4 x 56 inches  
(134 x 142.2 cm)



**Leon Kossoff**  
*Self-portrait, 1980*  
Oil on board  
9 1/2 x 8 1/4 inches  
(24.1 x 21 cm)



**Leon Kossoff**  
*Self-portrait No. 5, 1981*  
Oil on canvas  
10 x 8 inches  
(25.4 x 20.3 cm)



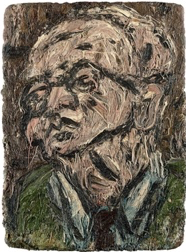
**Leon Kossoff**  
*Portrait of Philip, 1962*  
Oil on board  
36 1/4 x 25 1/2 inches  
(92.1 x 64.8 cm)

# LUHRING AUGUSTINE

531 West 24th Street  
New York NY 10011  
tel 212 206 9100 fax 212 206 9055  
[www.luhringaugustine.com](http://www.luhringaugustine.com)



**Leon Kossoff**  
*Portrait of Philip No. 1, 1962*  
Oil on board  
63 x 48 inches  
(160 x 121.9 cm)



**Leon Kossoff**  
*Head of Chaim, 1985*  
Oil on board  
32 x 24 inches  
(81.3 x 61 cm)



**Leon Kossoff**  
*Portrait of Father No. 3, 1972*  
Oil on board  
60 x 48 inches  
(152.4 x 121.9 cm)

Second Gallery (clockwise, left to right):



**Leon Kossoff**  
*Demolition of YMCA Building No. 2, Spring, 1971*  
Oil on board  
48 3/8 x 72 3/8 inches  
(122.9 x 183.8 cm)



**Leon Kossoff**  
*Nude on a Red Bed, November - December, 1972*  
Oil on board  
48 x 72 inches  
(121.9 x 182.9 cm)

# LUHRING AUGUSTINE

531 West 24th Street  
New York NY 10011  
tel 212 206 9100 fax 212 206 9055  
www.luhringaugustine.com



**Leon Kossoff**  
*Cathy*, 1998  
Oil on board  
31 1/2 x 23 1/2 inches  
(80 x 59.5 cm)



**Leon Kossoff**  
*Around the Table No. 3*, 1975  
Oil on board  
19 1/8 x 24 inches  
(48.5 x 61 cm)

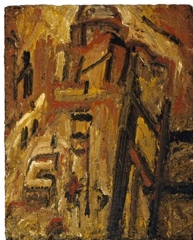


**Leon Kossoff**  
*View of Hackney with the German Hospital*, 1972  
Oil on board  
13 1/2 x 15 3/4 inches  
(34.3 x 40 cm)

Third Gallery by Appointment (*clockwise, left to right*):



**Leon Kossoff**  
*Seated Woman*, 1957  
Oil on board  
61 x 36 5/8 inches  
(154.9 x 93 cm)



**Leon Kossoff**  
*St Paul's Building Site*, 1954  
Oil on board  
60 x 48 inches  
(152.4 x 121.9 cm)

# LUHRING AUGUSTINE

531 West 24th Street  
New York NY 10011  
tel 212 206 9100 fax 212 206 9055  
[www.luhringaugustine.com](http://www.luhringaugustine.com)



**Leon Kossoff**  
*York Way Railway Bridge, Winter, 1971*  
Oil on board  
35 3/4 x 72 inches  
(91 x 183 cm)